

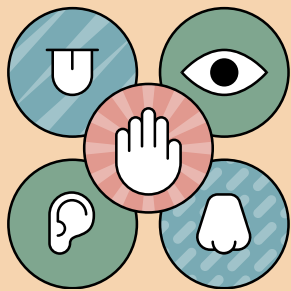


**CREATIVITY AND  
IMAGINATION**

# Why teachers should include outdoor exploration on daily routines?



**SOCIAL AND  
EMOTIONAL  
DEVELOPMENT**



**SENSORY  
EXPLORATION**



**COGNITIVE  
DEVELOPMENT**



**PHYSICAL  
DEVELOPMENT**



**CONNECTION  
WITH NATURE**

# CLASSROOM BEYOND WALLS



Allow flexibility in daily schedules to accommodate outdoor free play and exploration, recognize the value of unstructured, child-led play time in nature.